



CALIFORNIA STATE PARKS

Upper Truckee River Restoration and Golf Course Reconfiguration Project



November 2007

This newsletter is the second in a series to provide information and updates about a multi-year planning process that will determine a preferred alternative for restoring a 1.5-mile reach of the Upper Truckee River near Meyers, California. The property is owned by the California Department of Parks and Recreation (State Parks), and is located west of U.S. Highway 50 just south of Sawmill Road.

The Upper Truckee River, the largest river in the Lake Tahoe Basin, is a significant source of nutrients and sediment to the Lake, and planning is in progress for restoration of multiple reaches of the river, including the State Parks reach. That section of the river has been adversely affected by historic disturbances and modern development—including golf course construction and channel straightening—and has been targeted for restoration.

State Parks, the U.S. Bureau of Reclamation (Reclamation), and the Tahoe Regional Planning Agency (TRPA) have begun the environmental review process to identify and analyze alternatives for a restoration project along this reach of the river, including alternatives that would involve reconfiguration of the golf course. This newsletter is part of a comprehensive outreach effort by State Parks to keep the public informed and to encourage participation in the process.

Draft Alternatives

- ◆ Alternative 1, No Project/No Action.
- ◆ Alternative 2, Geomorphic Restoration With 18-Hole Golf Course.
- ◆ Alternative 3, Geomorphic Restoration With Reduced-Area Golf Course.
- ◆ Alternative 4, Engineered Stabilization (In Place, no change to Golf Course).
- ◆ Alternative 5, Full Geomorphic Restoration with removal of golf course (no golf).

Summary Of Recreation Planning Workshops

Two public recreation planning workshops were held on February 8 and 9, 2007 at the Lake Tahoe Golf Course Clubhouse, in South Lake Tahoe, CA. The purpose of the public workshops was to gather information about existing public use patterns in Washoe Meadows State Park (WMSP) and Lake Valley State Recreation Area (LVSRA) and provide an opportunity for the public to provide input, identify public access and resource protection issues, and to help address concerns raised during scoping. The workshops involved a short presentation about known important natural resources and public use of WMSP and LVSRA, followed by interactive small group planning exercises.

The exercises included the opportunity for attendees to place information on maps of the State Parks properties and record responses to specific questions. A combined total of 83 persons recorded their attendance on the sign-in sheets for both meetings, but many additional attendees chose not to sign-in.

Key input received during the meetings include:

- ◆ Many neighborhood users preferred that the golf course not move to the west side of the river.
- ◆ When considering Alternative 2, many expressed a preference for utilizing the eastern portion of the golf course relocation study area and not the area closer to the western park boundary (see map).
- ◆ Golfers expressed a preference for maintaining an 18-hole regulation course as opposed to a reduced area course (9 or 18 hole executive).
- ◆ Many participants requested that a bridge crossing(s) across the Upper Truckee River be included in the project area to serve non-golf related recreational use.
- ◆ It was suggested to look at properties adjacent to or near the park for other areas to relocate the golf course.



Discussion

The project is driven by the need to improve the habitat and water quality of the Upper Truckee River while providing a variety of recreation opportunities. Although one of the alternatives includes the relocation of a portion of the golf course to make room for the river restoration, the golf course area would NOT be expanded under any of the alternatives; the golf course area would remain the same, with an equal area of the existing golf course being restored to natural habitat.

State Parks recognizes that there are a variety of uses in these park units, including hiking, biking, golfing, horse-riding, and others. Recreation planning is part of both this EIR/EIS/EIS process and State Parks' overall management efforts. If an alternative is chosen that involves relocation of a portion of the golf course, State Parks would work to re-route trails to maintain continuity of trail connectivity while minimizing connection to the golf area.

Information received during public scoping (Sept/Oct 2006) and the Recreation Planning Workshops (see page 1 of this newsletter) is being considered as State Parks refines the draft alternatives.

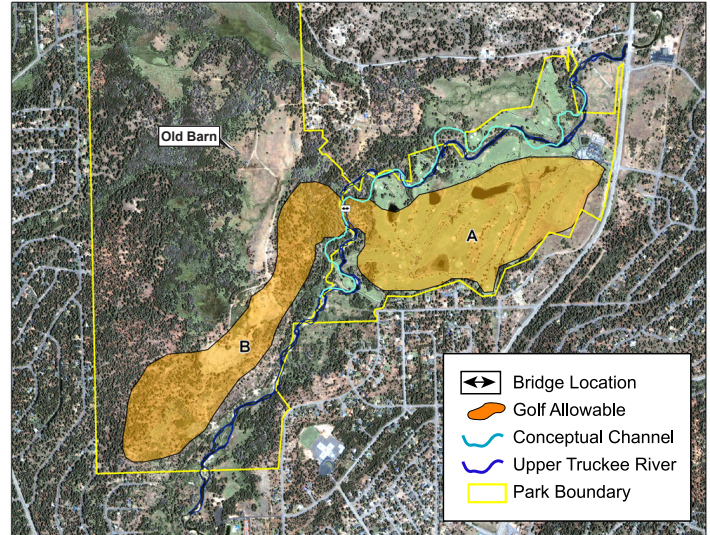
Timetable

Due to public input and the need for additional studies, the project schedule has been delayed.

In summer 2008, after reviewing the EIR/EIS/EIS and comments by the public and various agencies, a decision will be made as to which alternative best accomplishes the set restoration goals. A tentative schedule for restoration, depending on the chosen alternative, has construction beginning in 2010.

The Mission of the California Department of Parks and Recreation is to provide for the health, inspiration, and education of the people of California by helping to preserve the state's extraordinary biological diversity, protecting its most valued natural and cultural resources, and creating opportunities for high-quality outdoor recreation.

Map of Restoration Alternatives:



Area A: This area could contain either a portion of the 18-hole regulation course or the entirety of an 18-hole executive or 9-hole course or no golf course.

Area B: This is the portion of the study area indicated in the workshops that was preferred for relocation of golf holes. The holes to be relocated under Alternative #2 would be contained in this area. The portion of the map along the UTR above (west of) Area A is targeted for restoration.

For more information on the project, viewing of maps, documents and photos, and future meeting dates, please visit the project website at:

<http://www.restoreuppertruckee.net>

To provide comments, suggestions and feedback:

Cyndie Walck
California Department of Parks and Recreation
Email: utproject@parks.ca.gov
P.O. Box 16 • Tahoe City, CA 96145

Request for User Information

State Parks is conducting an informal user survey to collect additional information for existing users of Washoe Meadows SP and Lake Valley SRA. The data will be used to enhance State Parks knowledge of how these two parks are currently being accessed and what types of recreation occur on the properties. Please complete the enclosed survey and return it to us at your earliest convenience.