

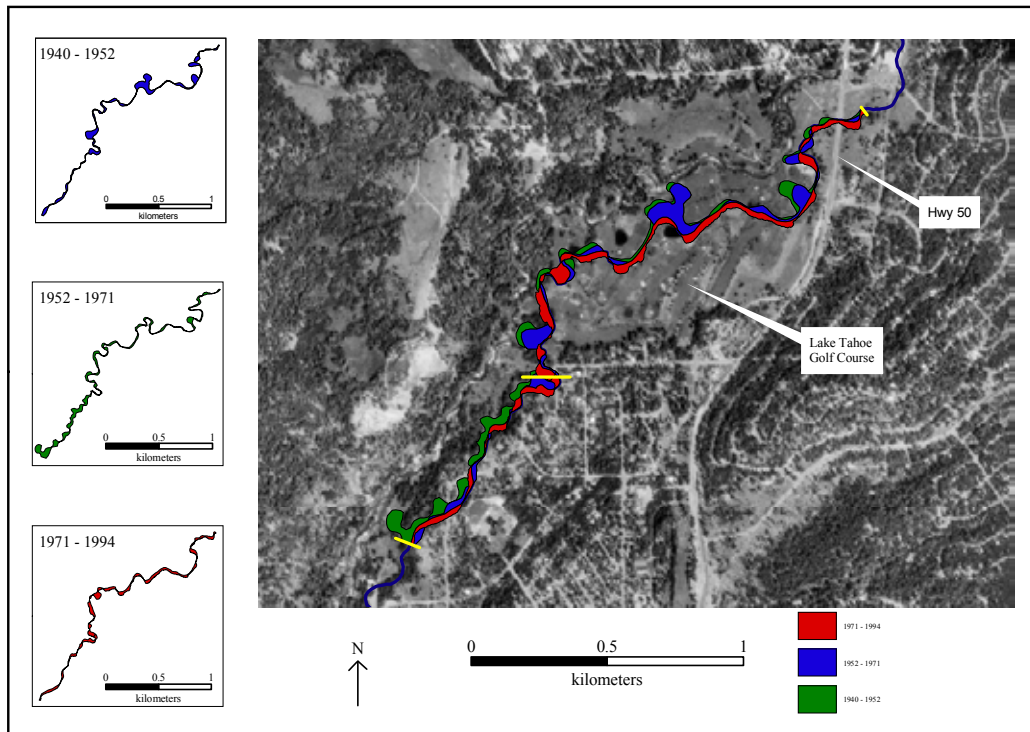
**Table 4-3. Time periods of polygons used in Upper Truckee River area analysis.**

Polygon number	Start date	End date	Duration (y)
1	1940	1952	12
2	1952	1971	19
3	1971	1994	23

Sinuosity decreased initially during the record period, but has risen slightly in the 1971 to 1994 period. Over the 53-year period, the length of the Upper Truckee River in this reach has decreased 26%. The channel length and ratio of channel length to valley length (sinuosity) for each of the four periods are summarized in Table 4-4 and illustrated in Figure 4-10.

**Table 4-4. Upper Truckee River channel-lengths.**

Year	Length (m)	Channel length / valley length
1940	4720	1.54
1952	3950	1.29
1971	3370	1.10
1994	3500	1.14
Valley distance	3070	-



**Figure 4-9. Map of polygons resulting from analysis of time-series channel centerlines along a reach of the Upper Truckee River.**